

Wealth Economics Company for Mining



*From Earth
To Wealth*

WECO is a specialized Saudi company providing integrated mining, geological, and drilling solutions across the Kingdom of Saudi Arabia.

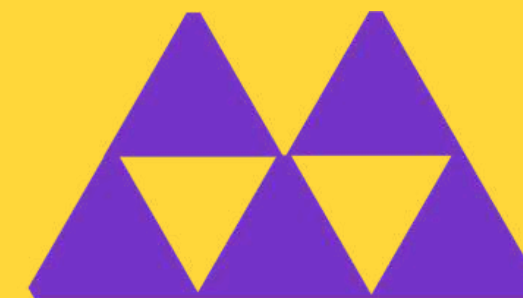
We operate with a strong commitment to accuracy, safety, and operational excellence, supporting mining investors, industrial companies, and large-scale exploration programs.

Since its establishment, WECO has focused on delivering:

- **High-quality and reliable data**
- **Professional and dependable field services**
- **Seamless and efficient project execution**

Our team consists of experienced geologists, drillers, field supervisors, and HSE officers who strictly adhere to international standards and best practices.

Company Overview



**WECO[®]
MINING**

WEALTH ECONOMICS COMPANY FOR MINING



Our Mission



To build and maintain long-term relationships with our stakeholders by delivering fully integrated mining services in a professional and cost-effective manner, utilizing the latest global technologies while prioritizing people, safety, and communities.

Our Vision

To become one of the leading providers of mining and earthworks services in Saudi Arabia and a trusted partner contributing to the objectives of Saudi Vision 2030.



Our Values & Standards

Safety

**Collaborative
Delivery**

**Sustainability
& Innovation**

**Integrity &
Responsibility**

Respect



Our Services

1. Exploration Drilling
2. Mineral & Non-Mineral Deposit Licensing
3. Exploration Consultancy
4. Crushing & Screening
5. GIS and Remote Sensing
6. Site Preparation & Infrastructure
7. Drilling & Blasting
8. Loading & Hauling
9. Mine Technical Support
10. QHSE Consultancy
11. Procurement & Supply Chain



Let's dive into our services



Exploration Drilling

Exploration Drilling

WECO provides reliable and efficient drilling services supported by experienced crews, high-quality sampling, and strong safety standards.

Our capabilities include:

- Diamond Core Drilling
- Reverse Circulation (RC) Drilling
- Grade Control Drilling
- Core Sampling
- Site management and supervision
- Clear technical reporting

Mineral & Non-Mineral Deposit Licensing

- Full support in preparing, submitting, and managing licensing requirements
- Continuous follow-up with authorities until final approval
- Coordination with relevant regulatory bodies

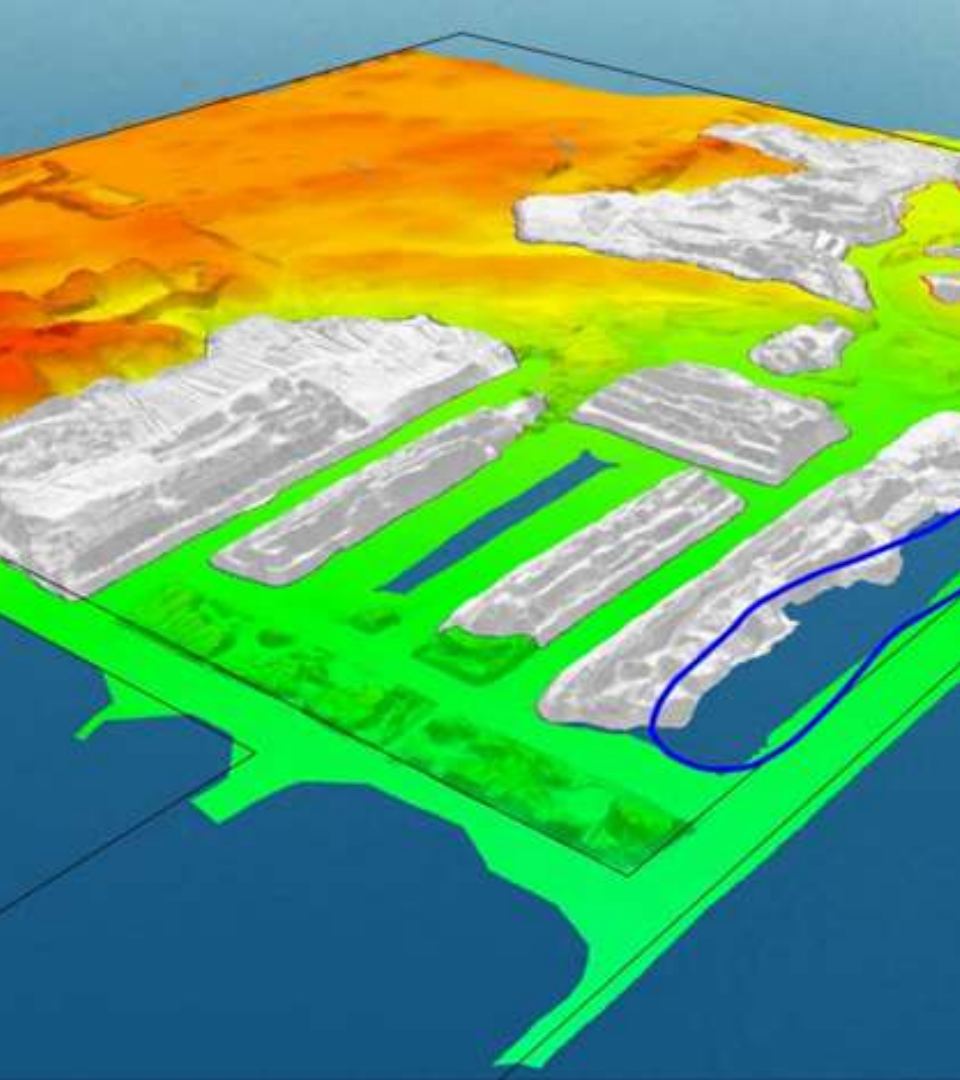


Exploration Consultancy

- Field assessments and site evaluations
- Historical data review and validation
- Satellite imagery processing and interpretation
- Surveying and geological mapping
- Sample collection and analysis
- Project generation and geological targeting
- Professional planning and data interpretation to support informed exploration decisions

Crushing Works

- Primary, secondary, and tertiary crushing
- Fine grinding operations
- Inclined, horizontal, and multi-slope vibrating screens
- Accurate material classification and separation



GIS & Remote Sensing Services

- Integrated data management and visualization
- Advanced spatial analysis and interpretation
- 3D geological modeling
- Technical reporting and professional data presentations



Drilling & Blasting

- Blast hole drilling in various diameters
- Explosives supply, handling, and storage
- Optimized drill pattern designs and tie-up plans
- Robust QA/QC systems for drilling and blasting activities

Mine Technical Support

- Mine planning and optimization
- Open-pit mine design
- Haul road design and traffic management systems
- Production supervision and operational support
- Surveying services, volume calculations, and 3D machine control systems



Procurement & Supply Chain

- Supplying high-quality mining products and equipment
- Provision of specialized tools and gadgets
- Installation and operational support



Site Preparation & Infrastructure

- Camp construction and camp management
- Establishment of workshops and site facilities
- ROM pad development
- Stockpile construction
- Structured reporting and clear technical presentations

Environmental Works:

- Tree boxing and protection works
- Tree relocation and replanting in compliance with environmental standards
- Supporting sustainability and vegetation preservation initiatives



Loading & Hauling



- **Overburden removal**
- **Ore mining operations**
- **Full ancillaries management including:**
 - ▶ **Dozing**
 - ▶ **Grading**
 - ▶ **Dust suppression systems**

QHSE Consultancy



- **Preparation of HSE dashboards and KPIs**
- **Development of HSE standards, procedures, and policies**
- **Safe Work Instructions (SWI)**
- **Daily reporting systems**
- **Comprehensive HSE Manuals in compliance with local and international standards**

What truly sets WECO apart?

WECO stands out through its combination of advanced capabilities, experienced teams, and a strong commitment to safety, quality, and reliable execution. We deliver integrated solutions backed by modern equipment, fast mobilization, and proven performance across diverse mining projects.



WECO Competitive Advantages

Advanced Drilling Fleet

**Certified & Skilled Drilling
Crews**

**Experienced Geological
Expertise**

**Proven Exploration Track
Record**

Robust HSE Framework

**Rapid Mobilization
Nationwide**

**Digital & Surveying
Capabilities**

**Strong On-Site
Management**

Our Journey

*From Earth
To Wealth*





2025

75 +

New employees

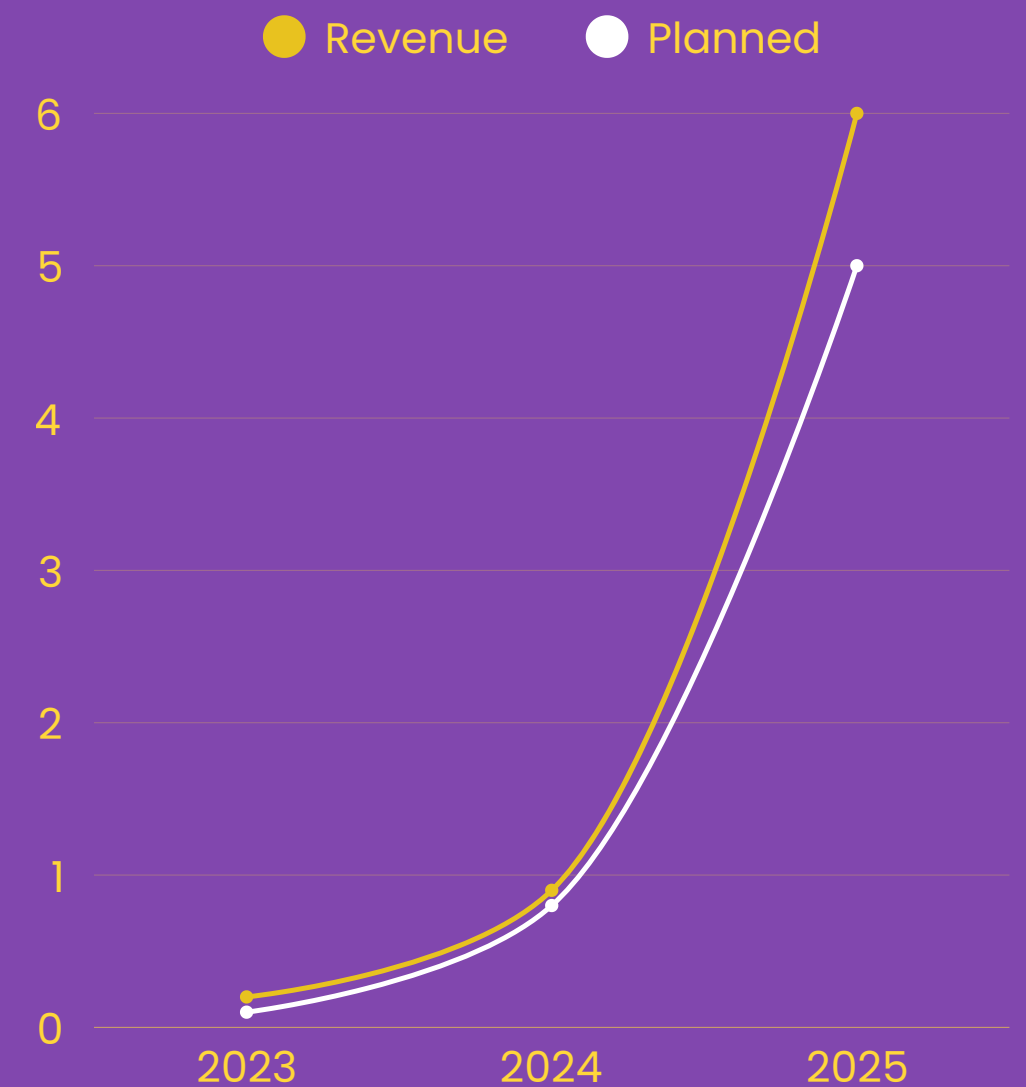
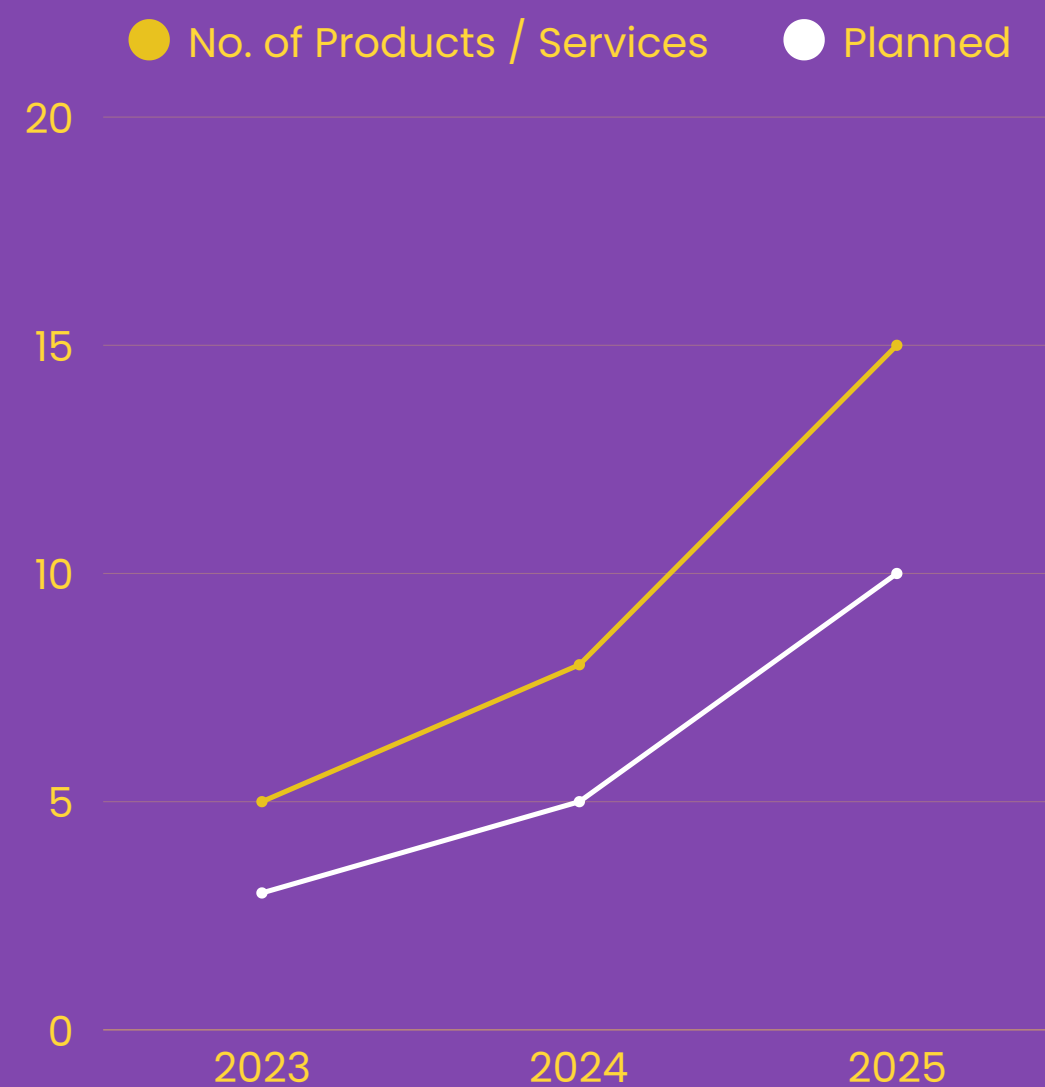
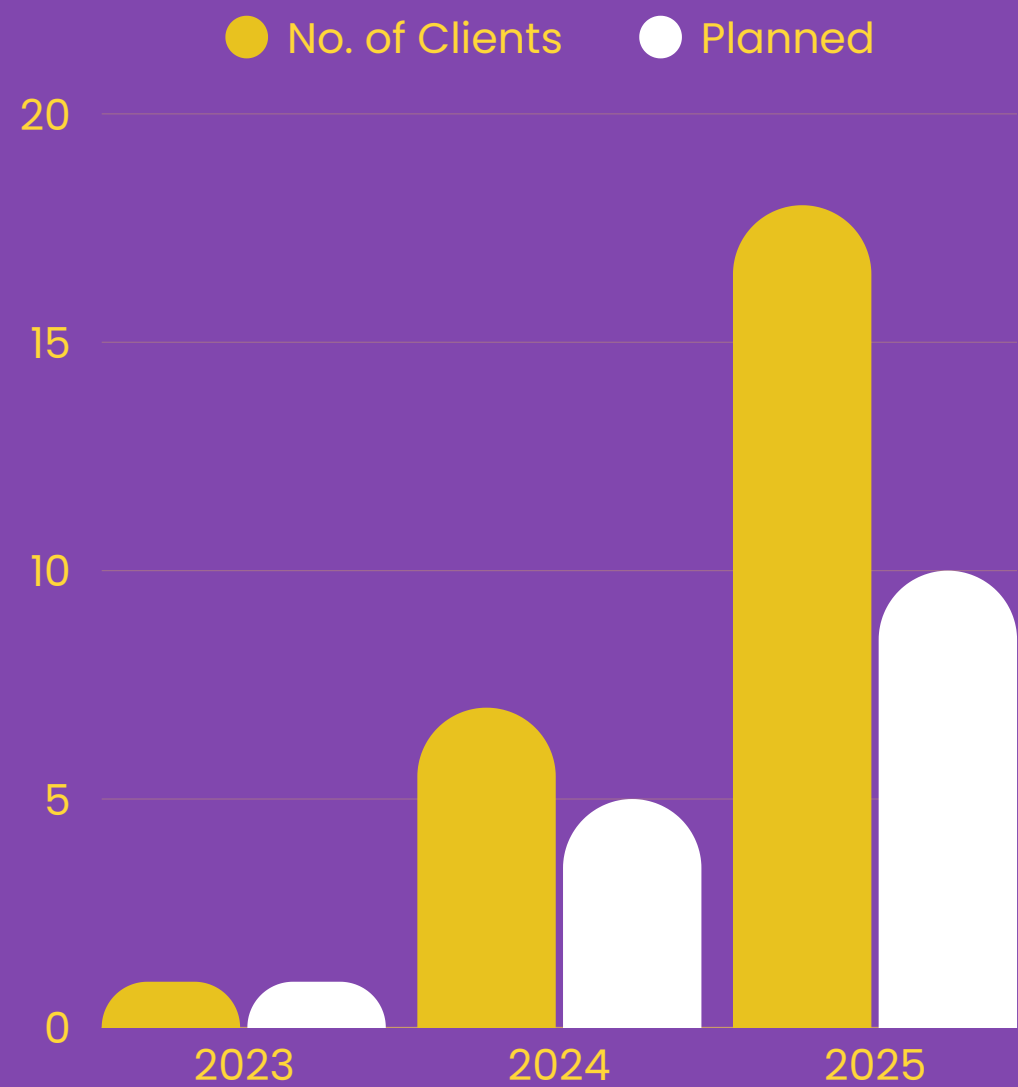
3

Newly established offices
around KSA

+12

New Clients

Our Growth in Numbers



Organizational Chart

Executive Management

Finance Department

Accounting

Contracts and Procurement

Warehouse

Human Resources Department

Support Services Department

Administrative Services

Transportation & Maintenance

IT

Project Management Department

Mining and Drilling

HSE

Logistics and Site Support

Geology Department

Exploration and Surveying

Geo-technical



*From Earth
To Wealth*



**Take a look at what
we accomplished in
2025**



Previous Projects

2025

PROJECT DESCRIPTION	CLIENT	PROJECT LOCATION
the Early Works for Mirage Visitor Center Project: <ul style="list-style-type: none">• Reverse Circulation (RC) Drilling: Total meters drilled – 7,000 meters.• Air Core (AC) Drilling: Total meters drilled – 13,000 meters.	Projects Pioneers Contracting Company	NEOM “Trojena”
The Construction of Civil works for Master Gas Expansion III – PKG 12 & SPPC Qassim Clusters	Projects Pioneers Contracting Company	Al Qassim
Reverse Circulation (RC) Drilling program	Gold And Minerals Limited Company	Umm Hijlan (Mamilah) License
Reprocessing Tailing Drilling Sampling	Ma’aden	Mahd Ad Dhahab – Sukhaybarat
Heap Leach Sampling by Diamond Drilling (DD)	Ma’aden	Mahd Ad Dhahab
Surveying, geological studies, and mining & blasting license issuance for Al Zahra Project	Almozaini	Riyadh
Manual Surface Sampling	Ma’aden	Alba’aitha



RC Drilling Program at Turbah / Umm Hijlan

Successful execution of the RC drilling program to evaluate near-surface and subsurface mineralization and define geological extensions. Drilling was completed as per the approved plan using PRD Gold GC RC Rig, with accurate collar positioning, azimuth, dip control, and full downhole surveying every 6 m to EOH.

Sampling followed industry standards with split samples (3–5 kg assay / 35–40 kg reference) under strict QA/QC and chain of custody procedures.

The program was completed with zero HSE incidents, supported by daily TBTs and weekly coordination meetings. All drill holes were properly rehabilitated and cement-collared, clearly marked, and closed in compliance with environmental and regulatory requirements.



Reprocessing Tailing Drilling Sampling

Successfully completed over 3,000 linear meters of TSF auger drilling and sampling

Project executed over a period of 3 months across two different TSF sites: Mahd Ad Dahab & Sukhaybarat

Operations carried out using manual auger drilling techniques, suitable for tailings material

Deployed a total workforce of 45 personnel across both sites

Sampling performed at predefined locations and controlled depth intervals

Activities conducted under continuous geological supervision

Execution fully aligned with approved JSA and site safety procedures

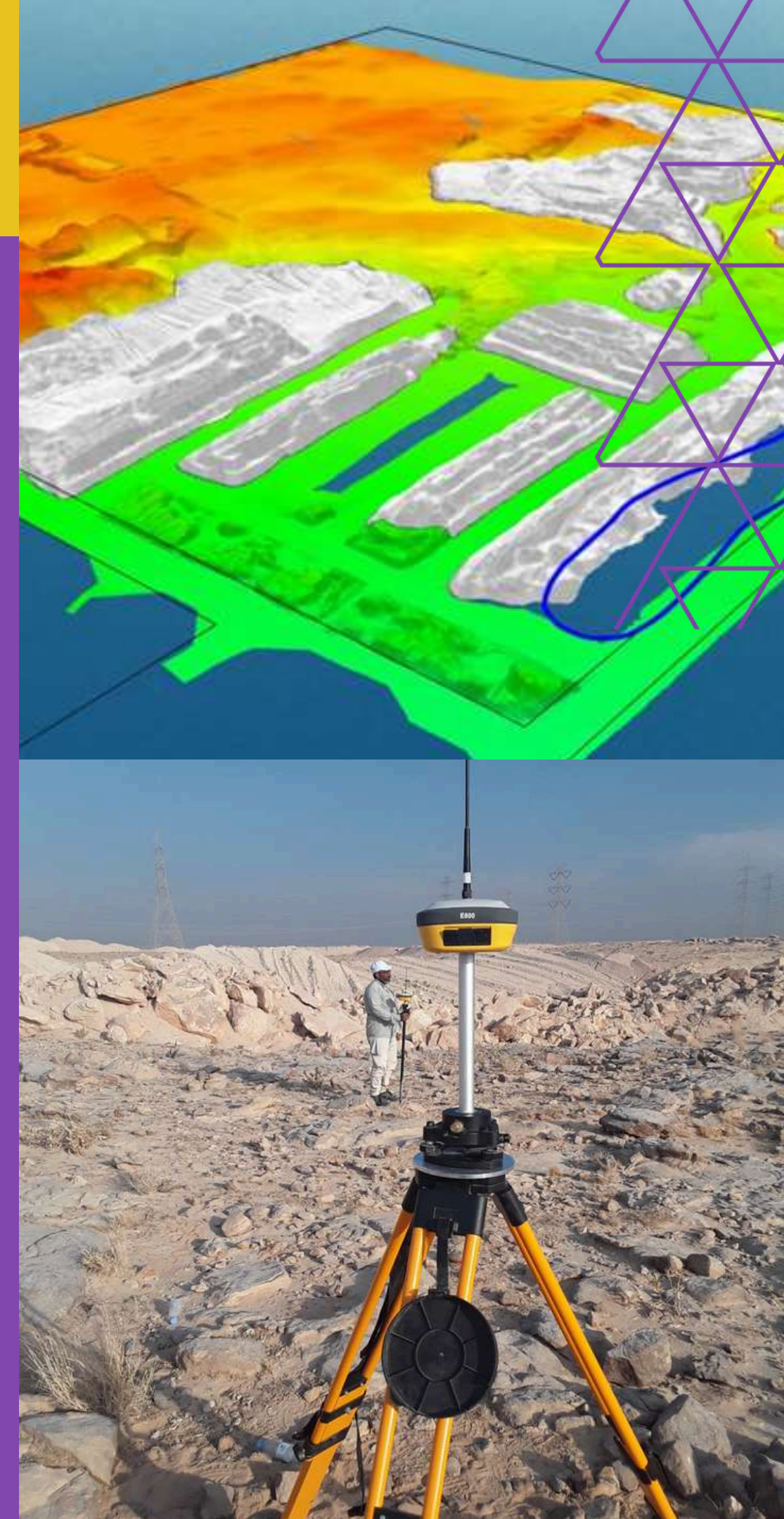




Surveying and geological surveying work for the Al-Zahra project

The project execution is based on integrated desktop studies, satellite imagery analysis, and field verification to ensure technical accuracy and regulatory compliance. Survey data review confirmed that the submitted data predates recent leveling works, while official platforms verified the presence of an active Exploration License within the project area.

Updated satellite and aerial imagery (March 2025) identified existing stockpiles and partially completed road works. The scope includes updated mining surveys, 3D terrain and geological modeling, silica sand sampling and analysis, subsurface investigations, and full preparation and follow-up of the required documentation to obtain both the Mining License (Sector No. 5) and the Blasting License in coordination with the relevant



Sampling activities were conducted within active heap leach facilities using a direct push pipe method

The methodology was applied without using a drill bit and without the use of water or air during sample collection

This approach was specifically selected to preserve sample integrity and prevent any disturbance or alteration of the material

The method is highly suitable for compacted and sensitive leach materials

Sampling locations and depths were defined in coordination with the geology and technical teams

Representative and unaffected samples were successfully obtained to meet technical evaluation requirements

Samples were securely handled and delivered to the designated laboratory

All activities were executed in full compliance with site HSE and operational requirements

Successfully collected 1200 linear meter of samples within 21 days



Heap Leach Sampling by Diamond Drilling (DD)

Successfully collected over 4 tons of bulk surface samples within 4 days

Delivered two controlled particle size fractions:

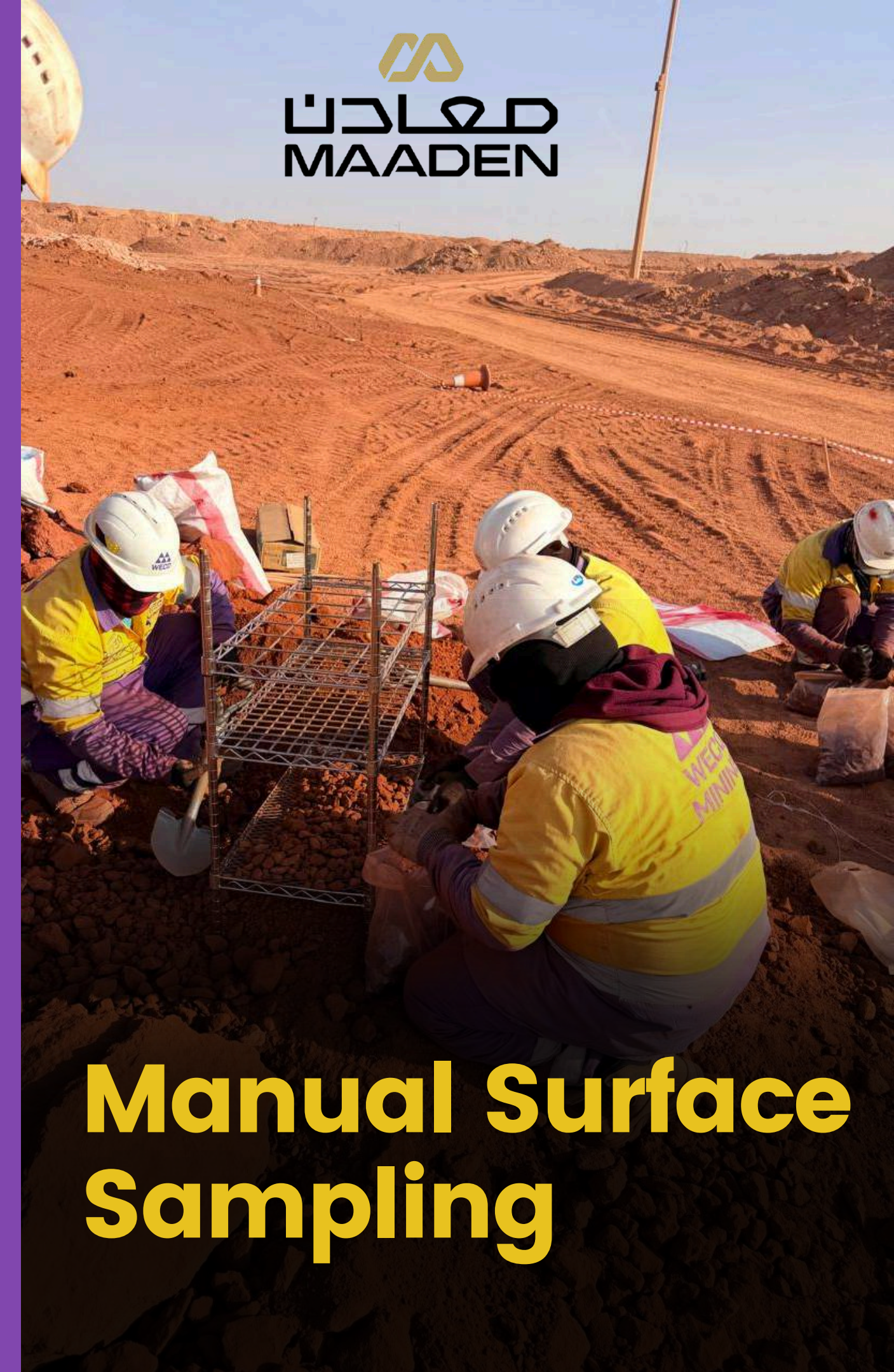
- 10 mm – 20 mm
- 30 mm – 90 mm

Sampling locations selected based on grid zones in coordination with the geology team

Achieved consistent size control using manual screening tables and sieves

Executed using minimal manual tools while maintaining productivity and quality

All activities completed in full compliance with site HSE requirements



Manual Surface Sampling

Tree Boxing & Transplantation

This project aims to protect existing trees and preserve the natural vegetation cover within the project area through controlled tree boxing, relocation, and replanting activities.

The works are executed in compliance with environmental regulations and sustainability best practices to minimize land disturbance during site development.

The scope includes surveying and tagging trees, implementing proper tree boxing and root protection methods, safe relocation to approved areas, and replanting using suitable soil and irrigation systems.

The project contributes to environmental protection, supports sustainable development, and ensures the preservation of green cover while enabling safe and efficient project execution.





Health, Safety and Environment

Our Main Responsibilities

Individual Health



Occupational Safety



Environmental Protection



Health, Safety & Occupational Health

Safety is a core value at WECO and an integral part of all operations, ensuring the protection of personnel, equipment, and assets.

Mandatory use of Personal Protective Equipment (PPE)

PPE inspection, certification, and regular maintenance

Rig safety procedures and equipment isolation practices

Toolbox talks, Job Safety Analysis (JSA), and Permit to Work systems

Clear emergency procedures communicated to all personnel

Fully developed Emergency Response Plans (ERP) for all sites

Incident reporting, investigation, and corrective action tracking

Comprehensive HSE documentation and records management

Environmental Protection & Sustainability

WECO is committed to minimizing environmental impact and protecting natural resources throughout all project phases.

- Safe handling and storage of fuel, oil, and chemicals

- Noise control measures for compressors and heavy equipment

- Proper waste segregation, storage, and disposal in accordance with regulations

- Controlled land disturbance and site restoration practices

- Responsible management of drilling fluids and cuttings

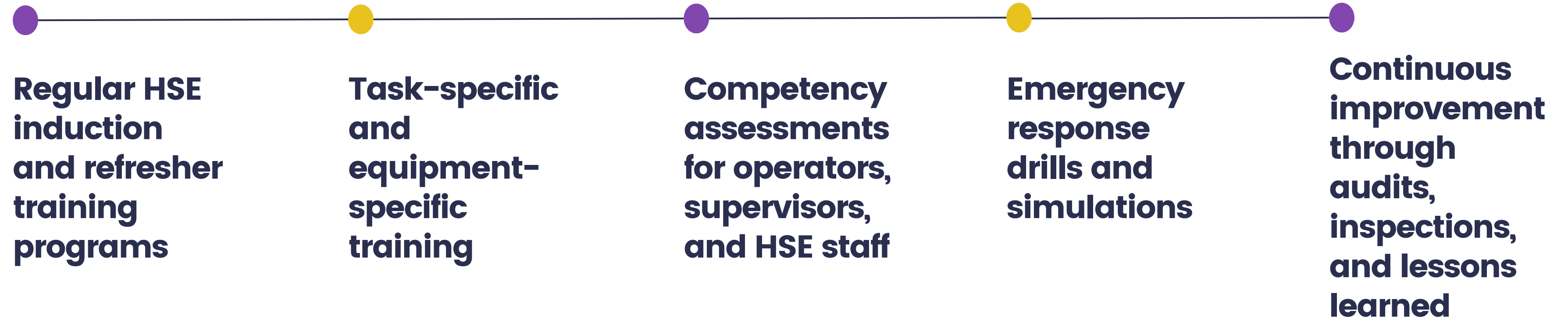
- Protection, boxing, relocation, and replanting of trees

- Dust emission control systems during drilling, hauling, and crushing

- Preservation of natural vegetation and surrounding ecosystems

Training, Competency & Safety Culture

WECO believes that competent people are the foundation of safe and successful operations.





WECO is your trusted partner for integrated mining, exploration, and drilling solutions across the Kingdom of Saudi Arabia.

Thank you